



andrew mckeown
s c u l p t o r

andrew mckeown

s c u l p t o r

ANDREW McKEOWN has completed many large scale sculpture commissions throughout the U.K. for local councils, housing developers and environmental agencies such as Groundwork U.K. and Yuill, Miller and Haslam Homes.

Recurring themes within Andrew's work are those of growth, change and renewal and these natural or organic themes are often combined with site specific historical or industrial references which can be both literal and metaphorical.

An interesting example of this approach can be seen in the sculpture 'Breaking the Mould' which takes the form of a giant seed which has emerged from an old industrial mould. The mould is broken and no longer useful but the last cast to be made is a new natural life form. The sculptures symbolism creates a striking resonance with the former and future uses of many of the twenty one Groundwork Changing Places regeneration sites where the sculptures are located.

Casting and mould making processes inform and influence Andrew's work in both a practical and conceptual way and he often creates installations of multiple sculptures which are cast or fabricated in durable materials such as iron, steel, bronze and stone.

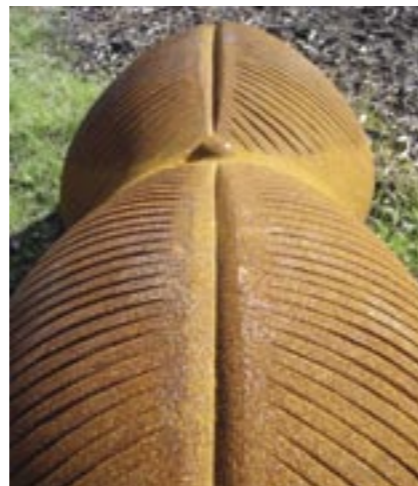
Local communities have been involved in all of Andrew's public commissions and he has extensive experience and knowledge in this area. Andrew lives and works in the North East of England and is available for public and private commissions , residencies and exhibitions throughout the U.K. and internationally.



The Jewels of The Sea Sculpture Trail

The Jewels of the Sea Sculpture Trail consists of over thirty large cast iron sculptures which are inspired by single cell organisms called Diatoms. Diatoms are a type of plankton and they form the basis of almost all the food chains in the oceans. The sculptures aim to symbolize the start of new life at the 'East Shore Village' where once stood the old 'Vane Tempest' coal mine.

The Jewels of the Sea Sculpture Trail was commissioned by the Yuill, Miller, Haslam Consortia for the entrance site to the East Shore Village housing development in Seaham, County Durham.



Helisira

2006. Cast iron.
300 x 120 x 30 cm (dia) spheres.

Part of the 'Jewels of the Sea Sculpture Trail'.





Tabellaria, 2005. Cast iron, 220 x 30 x 30 cm.

Lyrella, 2006. Cast iron, 150 x 70 x 60 cm.

Hukovia, 2005. Cast iron, 120 x 120 x 120 x 50 cm.

Lyrella, 2005. Cast iron, 150 x 70 x 60 cm.

Lyrella & Helisira, 2006. Cast iron.

Trilaceae 2006. Cast iron. 100 x 100 x 100 x 25 cm.

Part of the Jewels of the Sea Sculpture Trail.
Commissioned by Yuill, Miller and Haslam Homes.



Stephanopyxis

2005. Cast iron.
130 (dia) x 120 cm.

Part of the Jewels of the Sea Sculpture Trail.
Commissioned by Yuill, Miller and Haslam
Homes for the entrance to the East Shore Village.





Organism

2007. Cast steel with a bronze patina.
200 x 120 cm (dia).

Commissioned by Groundwork South Tees as part of the redevelopment of the cliff lift area of Saltburn top promenade.



Breaking the Mould

2000. Cast stone and iron,
200 x 60 x 60 cm x 4 pieces.

Darenth Country Park, Dartford, Kent. (1 of 21 editions).
Commissioned by Groundwork UK and repeated on the 21 Changing Places regeneration sites throughout the U.K.





Crystallization

2004. Core ten steel.
Various dimensions.

Commissioned by Middlesbrough
Council for Albert Park, Middlesbrough.



Seed

2002. Cast iron.
200 x 400 x 50 cm.

St. Phillips Square, Salford.
Commissioned by Salford City Council.





Germination

2005. Core ten steel.
Seven pieces of various sizes - 60 - 270 cm high.

Commissioned by Tees Valley Wildlife Trust as the entrance feature to Portrack Meadows Wildlife Park, Stockton on Tees, Cleveland.



Relic

2000. Jesmonite (acrylic resin), wood and steel.
300 x 500 x 50 x 40 cm.

Commissioned by Groundwork West Durham as the central feature for Newfield Millennium Green, County Durham.





Plumline

1999, Plaster, 30 x 17 x 136 cm.
Collection of the artist.

Pair

1999, Plaster, 30 x 17 x 17 cm.
Collection of the artist.

Hybrid

1999, Plaster, 30 x 17 x 17cm.
Collection of the artist.



Seeds

2003. Cast iron, (installation of multiple pieces).
50 x 40 x 40 cm.

Commissioned by Groundwork Middlesbrough
for Easterside Park, Middlesbrough.





Strata

2003. Polyester resin and wood.
400 x 200 cm.

Commissioned by Sure Start Thorntree for the
entrance to the Thorntree Head Office, Middlesbrough.



Curved Strata

2003. Steel and resin.
200 x 100 cm.

Commissioned by Sure Start Thorntree for the
entrance to the Thorntree annexe, Middlesbrough.





Fossilization

2005. Cast stone.
120 x 90 cm (Edition of sixteen pieces).

Commissioned by the Yuill, Miller, Haslam Consortia
for the perimeter walls of the East Shore Village
housing development in Seaham, County Durham.

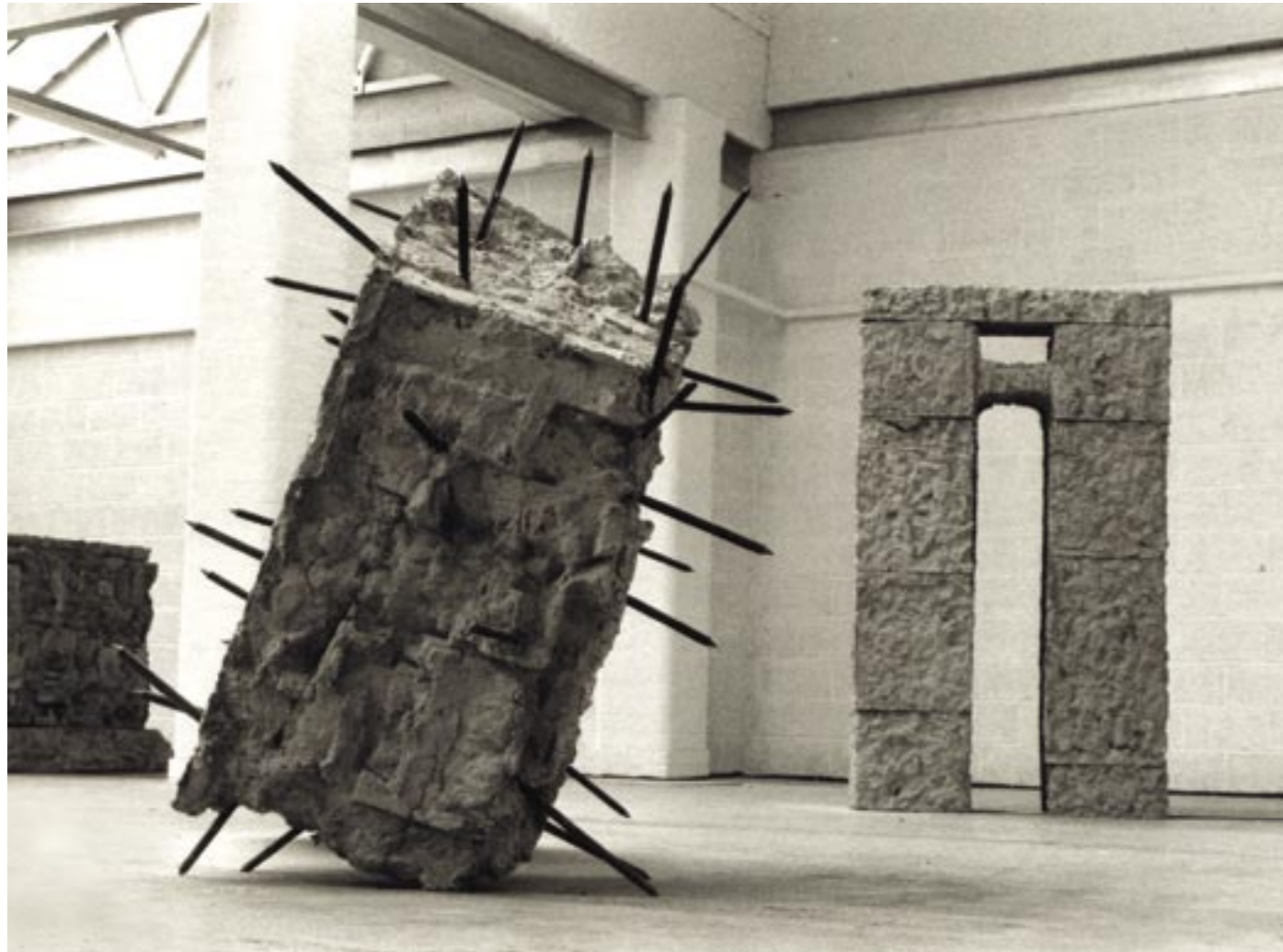


Fossil

2007. Cast Iron.
130 x 100 cm (dia).

Commissioned by Groundwork South Tees as part of
the redevelopment of the cliff lift area of Saltburn top
promenade.





Intrusion and Transition

1993. Cast stone, steel, electric heating elements.
200 x 100 x 40 cm.

Private collection.

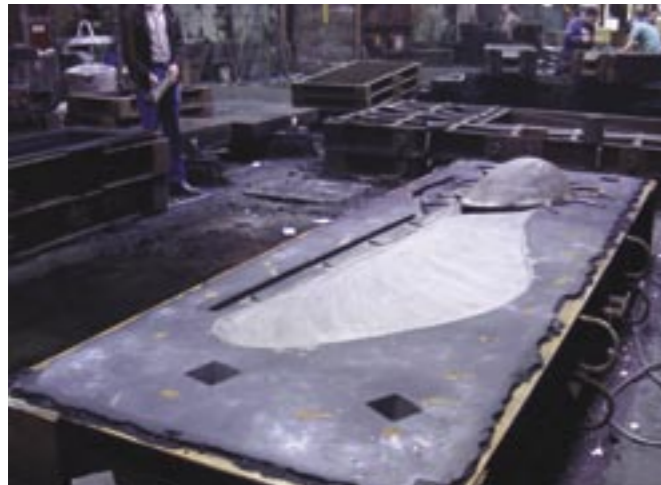


Preparation

1993. Cast stone, steel, boiling and frozen water.
2 No. 200 x 100 x 80cm.

Private collection.





Work in progress images

1. Modelling 'Trilacaea' details.
2. Carving 'Seed' detail onto the timber pattern.
3. Sand mould used for the casting 'Seed' into iron.
4. Casting iron in the foundry.
- 5 & 6. Sculpting 'Breaking the Mould' patterns.



ANDREW McKEOWN

Born

1970 Middlesbrough, Teesside, U.K.

Training

1990 - BA (Hons) Fine Art Coventry University.
1993

Public Commissions

2007 - 'Primary Growth', Epping Primary School New Build,
2009 Epping, Essex.

2007 - 'Asterionella', Bowesfield Park Entrance Roundabout,
2008 Stockton on Tees, Cleveland.

2006 'Fruits', Roseberry Primary School, Billingham, Tees Valley.

2006 - 'Organism', Entrance Feature,
2007 Saltburn Cliff Lift Commission, Saltburn, Cleveland.

2003 - 'Jewels of the Sea', Sculpture Trail,
2006 East Shore Village, Seaham, Co. Durham.

2005 'Shoots', Portrack Meadows Wildlife Park, Stockton-on-Tees.

2004 'Crystallisation' sculptures, Albert Park, Middlesbrough.

2004 'Mythical Beasts', Tollesby School, Middlesbrough.

2003 'Strata' Wall Relief Sculptures, Sure Start, Middlesbrough.

2002 'Seed', St. Phillips Square, Salford, Greater Manchester.

2002 'Steel', Consett Park Artworks, Consett, County Durham.

2002 'Buds', Riverside Park, Chester-le-Street, County Durham.

2002 'Seeds', Easterside Park, Middlesbrough, Cleveland.

2002 'River', Glebe Park Artworks, Middlesbrough, Cleveland.

2001 'Doorway', South Bank Millenium Green, Middlesbrough.

2001 'Time', Grangetown Millenium Green, Teesside.

1999 - 'Breaking the Mould', 21 marker sculptures for 21
2002 Groundwork Changing Places sites across England & Wales.

2001 'Larvae', Sculptural Feature, Maze Park, Stockton.

2000 Public Square relief sculpture, Guisborough, Teesside.

2000 'Diversity', Ayresome Gardens, Middlesbrough.

2000 'Hammer', Newfield Millenium Green, County Durham.

2000 'Fossil', Time and Place Sculpture Trail, Blackburn.

1999 'Lifecycle', Sandal St. Park, Manchester.

1996 'Pallysaurus', Pallister Park Primary School, Middlesbrough.

1996 'Maze', St Edward's Primary, Middlesbrough, Cleveland.

1995 - Oxford House (hostel for homeless people)
1996 Bethnal Green, London.

Exhibitions

2001 'Hindsight' - Group Show Preston Hall, Stockton-on-Tees.

1999 'Xsights' - Lanchester Gallery,
Coventry University.

1998 'Flavell Arts' Group Show, Thornaby-on-Tees, Teesside.

1994 'Whatever', The Changing Room Gallery, London, E17.

1993 'Exit', Unit 9, Gosford St Ind. Est, Coventry.

1992 'Coventry Open Art Exhibition', Herbert Art Gallery, Coventry.

1992 'Old Shop New Goods II', Coventry.





andrew mckeown
s c u l p t o r

t: 44 (0)1642 321104
m: +44 (0)7932 601383

info@andrewmckeown.com
www.andrewmckeown.com